

Modern Doll Collectors Convention® 2008

2008 Fashion Doll Runway

The Invitation

For our second Annual Fashion Doll Runway Charity Event, Modern Doll Inc., extended an invitation to all designers worldwide, attendees or not.

This year's charity was the [Spina Bifida Unit of Shriners' Hospital \(Tampa\)](#).

The Challenge was to design a three-piece mix and match costume that to fit a 16-inch Tonner fashion doll such as Sydney or Tyler.

The costume could be for day or evening, with all extra pieces used to change the look of the basic costume.

We had eight entries this year:



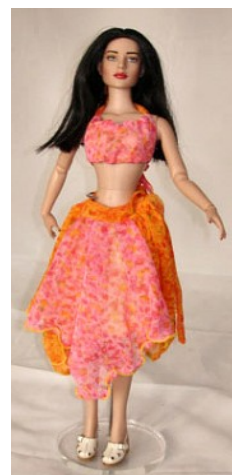
Crimson & Ice by Denise Beaudins



Dream Weaver by Judith Markich



Don't Get Witchy With Me by Paulette Goodreau



Sunny Outlook by Diana Jenness



Midnight Peach by Sandra Cogdill



Mexicali Rose by Mary Tiffany



Changes by Mary Goodreau



Anticipation by Pat Merrill

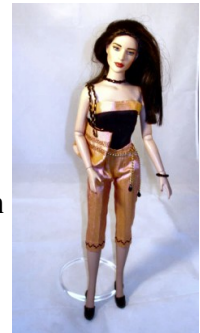
The top three entries all received dolls donated by Tonner Doll.

Sandra Cogdill took first place, with her **Midnight Peach**.



The second place winner also won the Internet Voting portion of the contest, and was our one Australian entrant, [Judith Markich's Dream Weaver](#).

Third place went to [Pat Merrill](#) for her **Anticipation**.



Midnight Peach

However, since the designated charity, [Spina](#) everyone participating - whether by bidding, consider themselves a winner in this year's

This has been a really a fun project for the designer or not - enjoyed seeing the wide runway presentation and voting for their



Anticipation

auction after the event raised \$2700 for our [Bifida Unit of Shriners' Hospital \(Tampa\)](#), judging, or submitting an entry - should Fashion Doll Runway.

past two years, and everyone who took part - variety of entries both on line and in the favorite online.

2009 Fashion Doll Runway

ElLOWYNE'S ENCHANTED ADVENTURE

The 2009 challenge was to create an original costume for Wilde Imagination's ElLOWYNE following the theme of *ElLOWYNE'S ENCHANTED ADVENTURE*.

The artists were asked to tell us what ElLOWYNE'S ENCHANTED ADVENTURE is (this may be a poem or just a paragraph or two of text).

The costume could consist of one or more pieces, with or without accessories (but would be judged solely on the outfit itself). Each artist was also to include a photo and brief biography.

All costumes - along with the ElLOWYNE Wilde dolls modelling them - were auctioned at the runway event.

The costumes were judged on originality, creativity and workmanship, following the theme, "ElLOWYNE'S ENCHANTED ADVENTURE".

The 2009 charity was the Carrie Tingley Hospital (CTH) associated with the University of New Mexico Medical Center (<http://hospitals.unm.edu/hospitals/unmeth.shtml>), named after Carrie Tingley, wife of then-Governor Clyde Tingley, who felt a hospital was needed for children of the state who were suffering from polio.

Carrie Tingley Hospital houses a 24-bed inpatient unit and conducts 21 specialized clinics for children from birth to 21 years of age. A community outreach program visits 16 communities throughout New Mexico, enabling rural patients to be seen by CTH doctors and staff. Surgery is performed at University Hospital. All children who are residents of New Mexico may receive services. Rehabilitation is in-house under the care of board-certified doctors and therapists. Carrie Tingley Hospital has a full service orthotics and prosthetics department to meet all the children's needs.

Over 85 percent of patient encounters at Carrie Tingley Hospital are with children who have chronic conditions, requiring complex specialty care only available at Carrie Tingley Hospital and the UNM Health Sciences Center. With a growth in patient volume of over 55% in recent years, Carrie Tingley Hospital is expanding these highly specialized services.

Our runway auction this year managed to raise **\$5000** for CTH.

The winning entries were:

For the first time ever, the winning doll also took home the Internet People's Choice award – this was:



Entry Number 03 **Snow Queen** by *Judith Markich*

As another "First Ever", second place was shared by both one of the favorites of the MDCC board:



Entry Number 06

The Markets of Marrakesh by *Sue Stark...*



... and a co-second place winner (and crowd favorite)



Entry Number 05 was **Lover's Lament** by *Francie Harville*

Third place went to



Entry Number 07 **Unlucky in Love** by Sandra Cogdil.
Sandra took home first place in the 2008 Fashion Doll Runway as well.

Additional Entries:



Our Treasurer happily took home
Entry Number 01 **Puss and Boots**
by *Denise Beaudins*

Entry Number 02 **Hospoa Kachina**
by *Michele Hardy*



Entry Number 04 had Ellowyne taking an
Adventure by Proxy by *Pat Merrill*



Entry Number 08 was **Sheherazade** by *Rosemarie Ionker*



Entry Number 09 **Fairy Queen** by
Mary Tiffany



Entry Number 10 **Forest Friends** by
Cheryl Johnson

Entry Number 11 was **Princess El** by



Janice Walthers

Entry Number 12 was **Modern Miss Kitty** by



Paulette Goodreau

This entry did not arrive in time for our online voting, but managed to take part in the actual runway

No Photo Available at present

Entry #13 **Woe is Me** by *Mary Goodreau*